

Spring Flight

Designed by John Kubiniec of Big Rig Quilting
Featuring the Wingsong Collection by Historic Huguenot Street
Finished Size: 65" x 65"

REVISED



Check www.windhamfabrics.com Free Project section to see if there are any pattern updates before you start your quilt

WINDHAM FABRICS

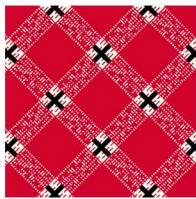
812 Jersey Ave ~ Jersey City, NJ 07310 ~ 201.659.0444 ~ FAX: 201.659.9719
www.windhamfabrics.com email: retail@windhamfabrics.com

Spring Flight

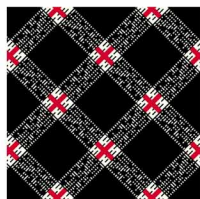
Page 2



39572-1



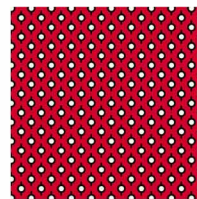
39575-1



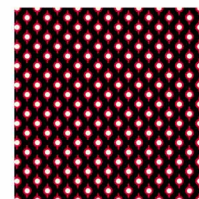
39575-2



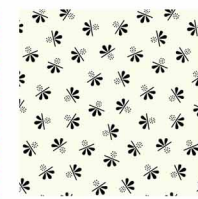
39576-3



39578-1



39578-2



39579-2

FABRIC A: 31835 (white)= 1 3/4 yards

- 1) Cut 7 strips - 1 1/2" x WOF (Width of Fabric) [Narrow Inner Border]
- 2) Cut 14 strips - 2" x WOF. From these strips cut 22 pieces 2" x 9", from the 11 strips 2" x 7 1/2" and 11 pieces 2" x 10 1/2"
- 3) Cut 1 strip 3 1/2" x WOF Cut 12 pieces 3 1/2" x 3 1/2" [Cornerstones]
- 4) Cut 3 squares 5 1/2" x 5 1/2" and then cut each square on the diagonal twice to give you 4 quarter-square triangles from each square (total of 12 used for ends of sashing strips).
- 5) Cut 4 strips 1 1/2" x WOF and then 10 strips 1 1/2" x 11" (BLOCK C & BLOCK F)

FABRIC B: 39572-1 = 1 yard

- 1) Cut 3 strips - 7 1/2" x WOF – then cut 11 blocks 7 1/2" x 7 1/2", from these strips
- 2) Cut a square 5 3/4" x 5 3/4", cut in half on the diagonal (Block C)

Fabric A - should be 11 pieces 2" x 10 1/2" NOT 11 pieces 2" x 10". Lucky I cut some sample fabrics.

kF)

FABRIC C: 39575-1 = 1 1/8 yard

- 1) Cut 2 squares 5 1/2" x 5 1/2" (BLOCK B)
- 2) Cut 2 squares 5 7/8" x 5 7/8" and cut in half on the diagonal (BLOCK D)
- 3) Cut 8 strips 3 1/2" x WOF (Binding)
- 4) Cut 1 square 6 1/4" x 6 1/4" then cut both on the diagonal twice to give you four quarter-square triangles (Block E)

FABRIC D: 39576-3 = 3/4 yard

- 1) Cut 7 strips 1 1/2" x WOF Narrow Middle Border)
- 2) Cut 1 strip 3" x WOF then cut 12 - 3" x 3" Squares
- 3) Cut 2 squares 3 3/8" x 3 3/8" then cut both in half on the diagonal (Block D)
- 4) Cut 2 squares 3 3/4" x 3 3/4" then cut both on the diagonal twice to give you four quarter-square triangles from each square. (Block E)

FABRIC E: 39579-2 = 1/2 yard

- 1) Cut 3 strips 3" x WOF then cut 18 rectangles 3" x 5 1/2" (Block B, Block D, Block E)

FABRIC F: 39578-2 = 7/8 yard

- 1) Cut 7 strips 3 1/2" x WOF then cut 20 rectangles 3 1/2" x 10 1/2" [Sashing Strips]

FABRIC G: 39578-1 = 5/8 yard

- 1) Cut 6 strips 3 1/2" x WOF, then cut 16 rectangles 3 1/2" x 10 1/2" [Sashing Strips]

FABRIC H: 39575-2 = 1 yard

- 1) Cut 8 strips 3 1/2" x WOF (Outer Border)

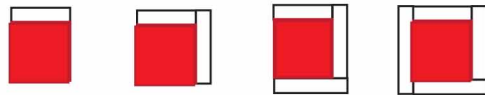
Spring Flight

Page 3

SEWING THE BLOCKS

BLOCK A (11 blocks)

- 1) Take the 11 – $7\frac{1}{2}'' \times 7\frac{1}{2}''$ squares of FABRIC B and attach the strips of FABRIC A (11 pieces $2'' \times 7\frac{1}{2}''$, 22 pieces $2'' \times 9''$, 11 pieces $2'' \times 10\frac{1}{2}''$ in the following order:
 - a. Attach strips in the order for a log cabin block. Attach a $2'' \times 7\frac{1}{2}''$ piece to one side of a block, press seams towards the center block.
 - b. Working clockwise take a $2'' \times 9''$ piece and attach it to the block, press seams towards the center block.
 - c. Continuing in a clockwise manner attach another $2'' \times 9''$ piece and press seams towards the center block.
 - d. Add the $2'' \times 10\frac{1}{2}''$ strip and press seams towards the center block.
 - e. Repeat with the remaining 10 squares of FABRIC C. You will have 11 blocks when finished



BLOCK B (2 Blocks)

FABRIC C ($5\frac{1}{2}'' \times 5\frac{1}{2}''$) FABRIC D ($3\frac{1}{2}'' \times 3\frac{1}{2}''$) FABRIC E ($3\frac{1}{2}'' \times 5\frac{1}{2}''$)

- 1) Sew two rectangles of FABRIC E to opposite sides of FABRIC C



- 2) Sew two squares of FABRIC D to opposite ends of FABRIC E, repeat with another set, then sew these units to opposite sides of the of the block. Make another block in the same fashion.



BLOCK C: Corner Setting Triangles (2 blocks)

- 1) Take the half-square triangles of FABRIC B. Sew a strip of FABRIC A $1\frac{1}{2}'' \times 11''$ to the long side of each triangle and then trim edges.



BLOCK D: Corner Setting Triangles (2 blocks)

- 1) Take 2 half-square triangles of FABRIC D and sew them to the ends of rectangle of FABRIC E
- 2) Sew a half-square triangle of FABRIC C to complete the block.



Spring Flight

Page 4

BLOCK E: Side Setting Triangles (4 blocks)

- 1) Take a square of FABRIC D and sew it to the end of a rectangle of FABRIC E
- 2) Take another rectangle of FABRIC E and sew it to the short side of a quarter square triangle of FABRIC C, Sew the unit created in step 1 to the other short side of the triangle.
- 3) Take 2 quarter square triangles of FABRIC D and sew them to the ends of 2 rectangles of FABRIC E
- 4) Make 3 more blocks in the same manner for a total of 4 blocks.



BLOCK F: Side Setting Triangles (4 blocks)

Take a quarter square triangles of FABRIC B and sew them two strips of FABRIC A (1 1/2" x 11") to the short sides of the triangle. Trim the ends of the white strips along the long edge of the red triangle. Make 3 more blocks in the same manner for a total of four.



SASHING STRIPS

ROW A (Make 2 Rows)

Take one rectangle of FABRIC E and two quarter-square triangles of FABRIC A and sew together to form a row. Make a second row in the identical fashion



ROW B (Make 2 Rows)

Take one rectangle of FABRIC E, two rectangles of FABRIC F and two squares and two quarter-square triangles of FABRIC A and sew together to form a row. Make a second row in the identical fashion



Spring Flight

Page 5

ROW C (Make 2 Rows)

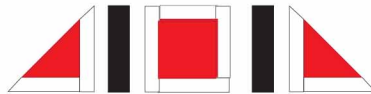
Take three rectangles of FABRIC E, two rectangles of FABRIC F and four squares and two quarter-square triangles of FABRIC A and sew together to form a row. Make a second row in the identical fashion



SEWING THE ROWS TOGETHER

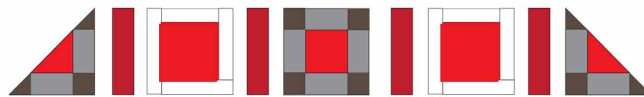
ROW 1 (Make 2)

Take one Block A, two Block F and two rectangles of FABRIC E and sew together into a row following the diagram. Make a second row exactly like this.



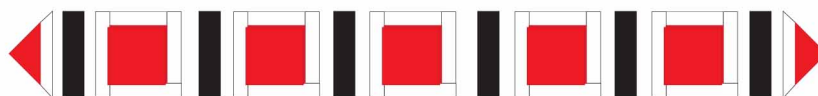
ROW 2 (Make 2)

Take two of Block A, one of Block B, and two Block E along with and four rectangles of FABRIC F and sew together into a row following the diagram. Make a second row exactly like this.



ROW 3 (Make 1)

Take five of Block A, and two of Block C along with and six rectangles of FABRIC E and sew together into a row following the diagram.

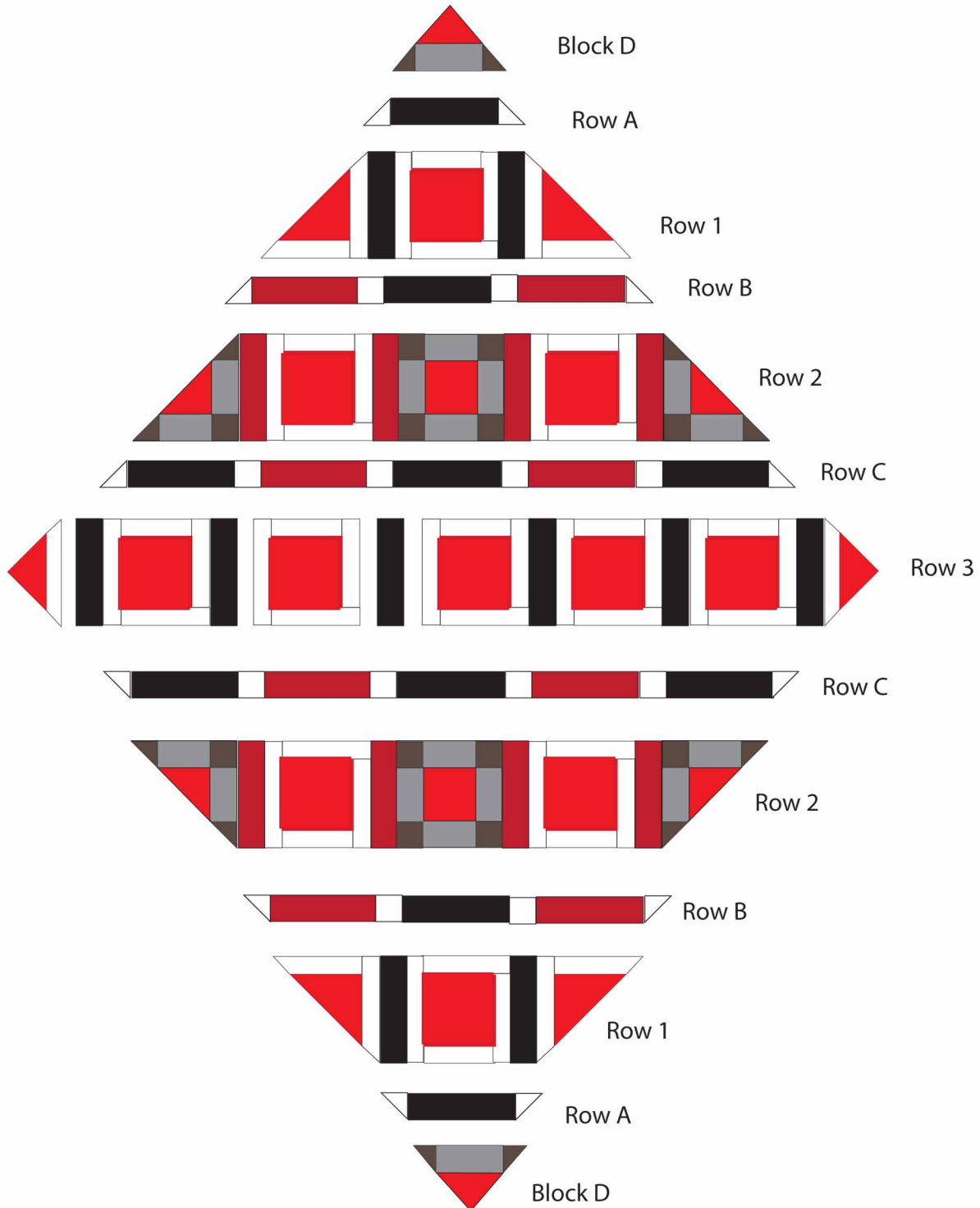


Spring Flight

Page 6

SEWING THE BODY OF THE QUILT

Take all the rows of blocks you have sewn (Rows 1-3) and the sashing strip rows (Rows A-C) along with the two Block Ds that you made and sew them together according to the following diagram. Align the corner stones in the sashing strips with the sashing strips between the blocks.



Spring Flight

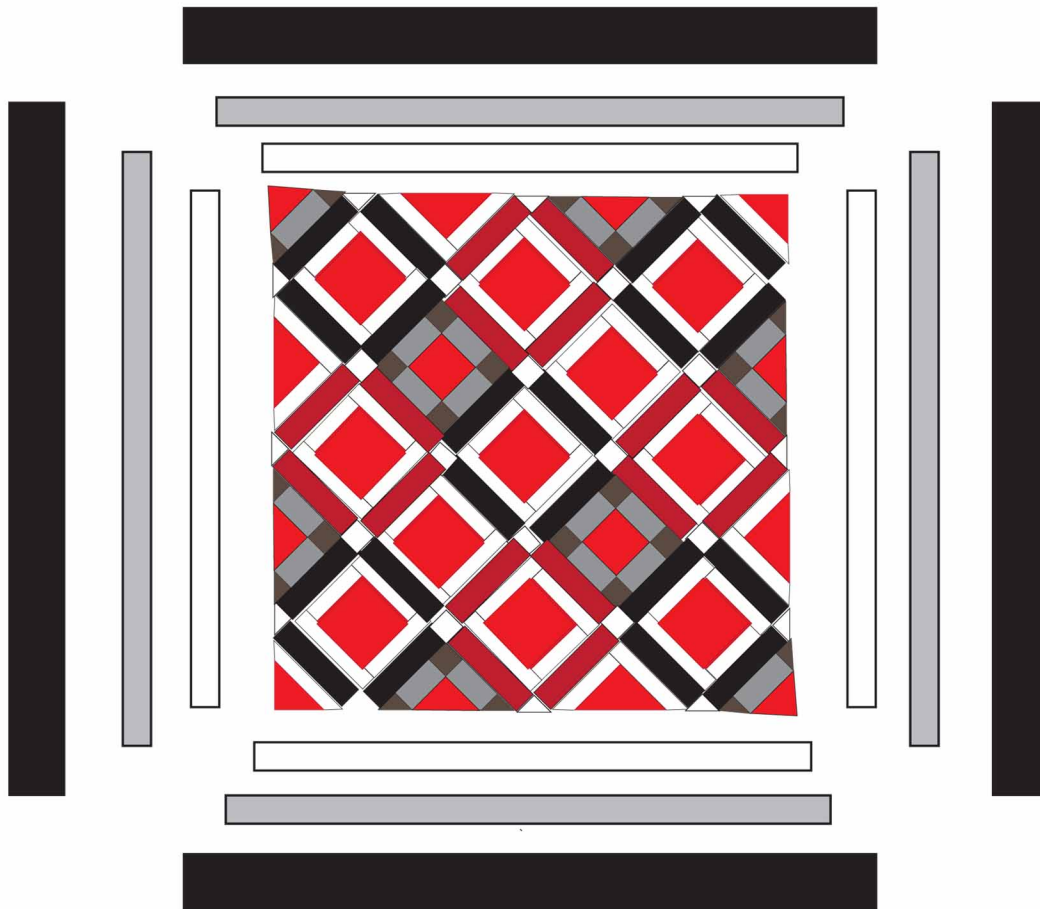
Page 7

Adding the Borders

1) Take the 7- 1 1/2" strips of FABRIC A and splice them together. Cut them into 2 strips 1 1/2" x 55 1/2" (side borders) and 2 strips 1 1/2" x 57 1/2" top and bottom borders. Add the side first and then the top and bottom borders

2) Take the 7- 1 1/2" strips of FABRIC D and splice them together. Cut them into 2 strips 1 1/2" x 57 1/2" (side borders) and 2 strips 1 1/2" x 59 1/2" top and bottom borders. Add the side first and then the top and bottom borders

3) Take the 3 1/2" strips of FABRIC H and splice them together. Cut them into 2 strips 3 1/2" x 59 1/2" (side borders) and 2 strips 3 1/2" x 65 1/2" top and bottom borders. Add the side first and then the top and bottom borders



FINISHING THE QUILT

- 1) Take the backing fabric and cut it into two equal lengths. Trim off the selvege and sew the pieces together
- 2) Layer the top, batting and backing, and quilt the quilt as desired
- 3) Splice the binding strips together and bind the quilt. The binding strips are designed for a half-inch binding.

Be sure to visit www.windhamfabrics.com to see the complete collection and to download other Free Projects